

Maria's Gazebo Dress

Copyright Edelweiss Patterns, 2011

www.edelweisspatterns.com

Size:	<u>6</u>	<u>8</u>	<u>10</u>	<u>12</u>	<u>14</u>	<u>16</u>	<u>18</u>	<u>20</u>
Bust	30.5"/78	31.5"/80	32.5"/83	34"/87	36"/92	38"/97	40"/102	42"/107
Waist	23"/58	24"/61	25"/64	26.5"/67	28"/71	30"/76	32"/81	34"/87
Hip	32.5"/83	33.5"/85	34.5"/88	36"/92	38"/97	40"/102	42"/107	44"/112

For the dress:

45" Fabric:

Sheer Fabric: 3 $\frac{3}{4}$ yds. fabric for all sizes 6-20

Lining Fabric: 3 $\frac{1}{3}$ yds. fabric for all sizes 6-20

60" Fabric:

Sheer Fabric: 2 $\frac{7}{8}$ yds. fabric for all sizes 6-20

Lining Fabric: 2 $\frac{1}{2}$ yds. fabric for all sizes 6-20

For the belt: 45" or 60" Fabric: $\frac{5}{8}$ yd. for all sizes 6-20

Recommended Fabrics:

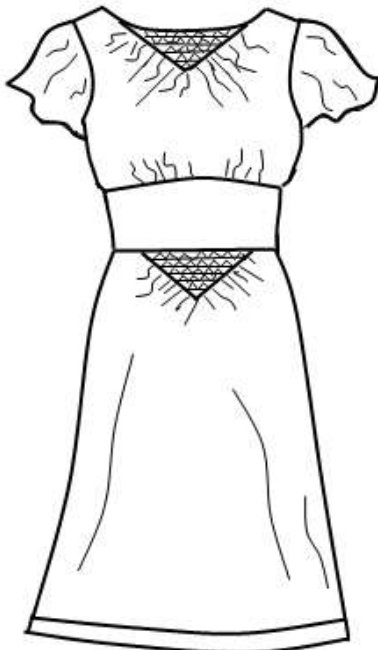
Sheer Fabric: Chiffon, chiffon georgette, organza, voile, batiste, dotted swiss

Lining: China Silk, rayon lining, lightweight polyester or acetate lining

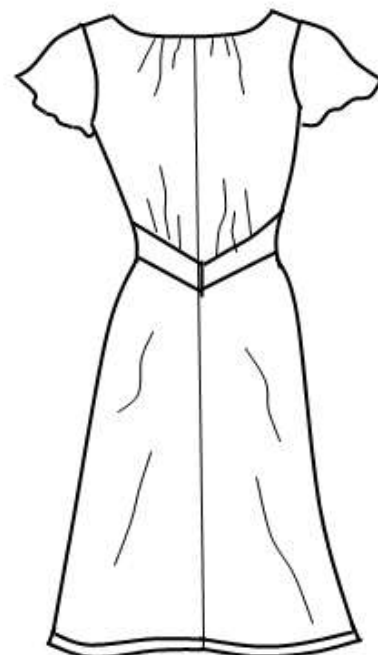
Belt Fabric: Silk Dupioni, Silk Shantung, Taffeta, Heavy Satin, Peau de Soie, Twill

Notions: Thread to match, one 18" non-invisible zipper, erasable fabric marker, one hook & eye

FRONT



BACK



www.edelweisspatterns.com