

# Maria's Gazebo Dress

Copyright Edelweiss Patterns, 2011

[www.edelweisspatterns.com](http://www.edelweisspatterns.com)

Size:	<u>6</u>	<u>8</u>	<u>10</u>	<u>12</u>	<u>14</u>	<u>16</u>	<u>18</u>	<u>20</u>
Bust	30.5"/78	31.5"/80	32.5"/83	34"/87	36"/92	38"/97	40"/102	42"/107
Waist	23"/58	24"/61	25"/64	26.5"/67	28"/71	30"/76	32"/81	34"/87
Hip	32.5"/83	33.5"/85	34.5"/88	36"/92	38"/97	40"/102	42"/107	44"/112

## For the dress:

### 45" Fabric:

Sheer Fabric: 3  $\frac{3}{4}$  yds. fabric for all sizes 6-20

Lining Fabric: 3  $\frac{1}{3}$  yds. fabric for all sizes 6-20

### 60" Fabric:

Sheer Fabric: 2  $\frac{7}{8}$  yds. fabric for all sizes 6-20

Lining Fabric: 2  $\frac{1}{2}$  yds. fabric for all sizes 6-20

**For the belt:** 45" or 60" Fabric:  $\frac{5}{8}$  yd. for all sizes 6-20

## Recommended Fabrics:

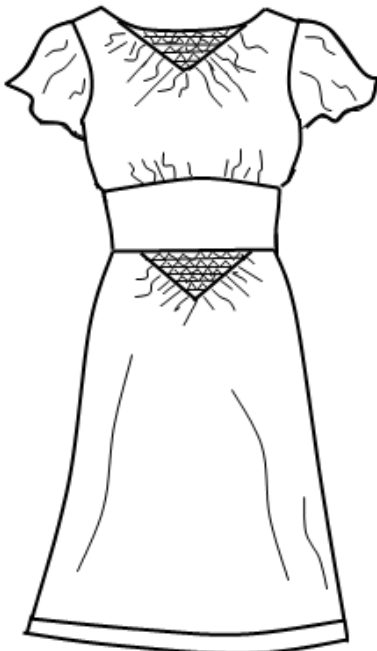
**Sheer Fabric:** Chiffon, chiffon georgette, organza, voile, batiste, dotted swiss

**Lining:** China Silk, rayon lining, lightweight polyester or acetate lining

**Belt Fabric:** Silk Dupioni, Silk Shantung, Taffeta, Heavy Satin, Peau de Soie, Twill

**Notions:** Thread to match, one 18" non-invisible zipper, erasable fabric marker, one hook & eye

**FRONT**



**BACK**

